

Cost-effective data security for branch office Ethernet links up to 10 Mbps



## Benefits

- Zero-overhead encryption provides greater bandwidth efficiency
- Easy to install into existing network environments
- Central configuration, monitoring, and management through SafeNet Security Management Center (SMC)

## Overview

Universal connectivity is the standard for today's enterprise. Connectivity between corporate and branch offices, server farms, data centers, and disaster recovery sites is a must. At the same time, increased regulation and threats against sensitive data are driving organizations to encrypt information as it traverses these networks. Faced with increasing costs, organizations are looking for scalable data protection solutions that allow them to optimize cost efficiency. Designed specifically for sites with low-bandwidth requirements, the Branch Office encryptor extends the SafeNet family of Ethernet Encryption devices to provide a complete solution for network data encryption from 10Mbps to 10Gbps.

## Unsurpassed Security of Network Data Transmission

The SafeNet Ethernet Encryptor Branch Office (SEE Branch Office) is a new encryption platform designed as a small desktop form factor to provide an integrated data security solution for point to point or meshed Ethernet links up to 10 Mbps. SEE Branch Office has been engineered to integrate transparently and simply into network architectures.

The SEE Branch Office is the perfect compliment to SEE 10G and SEE 1G Ethernet encryptors for enterprises needing for a lower cost per megabit at the remote or branch office. At the same time the SEE Branch Office encryptor provides professional firms and SMEs with a cost-effective security solution for their lower bandwidth requirements.

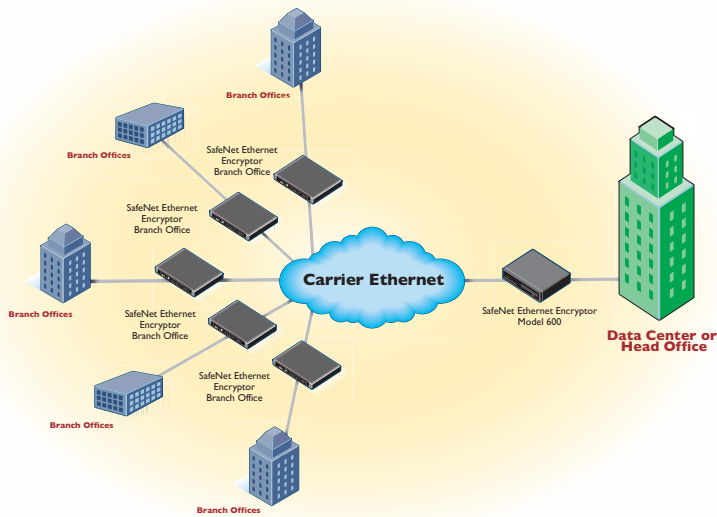
SafeNet Ethernet Encryptors provide strong performances benefits over traditional Layer-3 encryption solutions. Ultra-low latency and SafeNet's zero-overhead encryption modes are just a few. The SEE delivers instant protection across the network to assure the security of data transmissions including sensitive financial or personally identifiable information. This family of high-performance Layer-2 security appliances protects networks from 10Mbps to 10Gbps and integrates seamlessly within minutes.

## Addressing Security Standards

Using AES-256 keys, the industry standard for strong encryption, all Layer-2 payload data including IP addresses and higher level protocols are protected. Digital certificates are employed for remote device authentication and secure key exchange.

## Central Policy Management Lowers Cost and Increases Security

Like all SafeNet high-speed security appliances, the SEE Branch Office is managed by the SafeNet Security Management Center (SMC), a robust Web-based policy management application that is easy to use, secure, and provides the advanced audit and monitoring capabilities necessary for security compliance. SMC provides the ability to define integrated security policies that can be distributed across multiple devices, reducing management complexity and cost.



## Technical Specifications

### Interoperability

- SEE 100Mbps (Release 1)
- SEE 1Gbps (Release 1)
- SEE 10Gbps (Release 2)

### Management

- SNMPv3
- Ethernet 10/100 Base-T RJ45 for Local and Network Ethernet connections
- RS-232 Local console (DB9 style connector)

### LED Status Indicator

- Front Panel: Power; Traffic Security status, Management Port status, Local Ethernet Port status, Network Ethernet Port status, Alarm, Temperature Alarm, and Battery OK/Low
- Back Panel: Ethernet Link and Activity built in to RJ45 connectors

### Physical Security

- Tamper proof storage of encryption keys and user passwords
- Tamper resistant case

### Environmental

- 0 to 40C operating temperature
- 0 to 80% RH @ 40 C operating humidity
- 95% RH @ 40 C non-operating humidity

### Electrical

- An external AC to DC power supply is provided
  - AC: 100-240V, 50/60Hz
  - DC: 15V DC external supply, 18W maximum, 2.1mm center pin positive

### Mechanical

- Width: 185mm
- Depth: 160mm
- Height: 40mm
- Weight: 630g

## Performance

- Full-duplex operation at data rates up to 10 Mbps
- Key change without interruption

## Network

- Ethernet 802.3
- VLAN 802.1Q
- Q-in-Q VLAN 802.1ad
- Supports 64 to 1532-byte frame sizes

## Interfaces

- 10/100 Base-T RJ45

## Connections

- Supports up to 512 meshed connections
- Unique key pair per connection

## Access Control

- Role based

## Cryptography

- AES algorithm - 256-bit key
- Self synchronizing CFB mode

## Reporting

- Audit and event logs
- Alarms
- SNMP traps

## Key Management

- ATM Forum Security Specification V1.1
- RSA 1024-bit public key
- Master/session key
- Authentication using digital certificates

## Accreditations

- RoHS
- FCC Class B
- External Power Supply is certified to FCC Class B, UL/cUL, IEC-60950, CE mark



[www.safenet-inc.com](http://www.safenet-inc.com)

#### Corporate Headquarters:

4690 Millennium Drive, Belcamp, Maryland 21017 USA  
Tel.: +1 410 931 7500 or 800 533 3958, Fax: +1 410 931 7524,  
Email: [info@safenet-inc.com](mailto:info@safenet-inc.com)

#### EMEA Headquarters:

Tel.: +44 (0) 1276 608 000, Email: [info.emea@safenet-inc.com](mailto:info.emea@safenet-inc.com)

#### APAC Headquarters:

Tel.: +852 3157 7111, Email: [info.apac@safenet-inc.com](mailto:info.apac@safenet-inc.com)

For all office locations and contact information, please visit [www.safenet-inc.com/company/contact.asp](http://www.safenet-inc.com/company/contact.asp)

©2009 SafeNet, Inc. All rights reserved. SafeNet and SafeNet logo are registered trademarks of SafeNet. All other product names are trademarks of their respective owners. PB-EthernetEncrytorBranchOffices-11.16.09