



# Quick Start Guide

## Luna G5

(HSM)

© 2009 SafeNet, Inc.  
PIN 007-011303-001

## Introduction

This guide is your starting point for installation and setup.

- It provides a visual list of items you should have received, and some optional items that you might have received.
- It provides the initial steps to install and connect your new hardware (mounting in a rack, connecting cables, etc.).
- It tells you how to find the main product documentation with its instructions for installing the product software and for configuring the system.

The main product documentation is in the form of WebHelp that you can view with any modern Web browser. You should make a copy of the documentation on any computer where you install the software. The Help contains detailed instructions, explanations, and alternate use scenarios for your new SafeNet Luna G5 product.

If you encounter any problems, contact SafeNet Customer Support at <http://www.safenet-inc.com/support/find.asp> or call: 800-545-6608 (US) or 410-931-7520 (International) or e-mail [support@safenet-inc.com](mailto:support@safenet-inc.com)

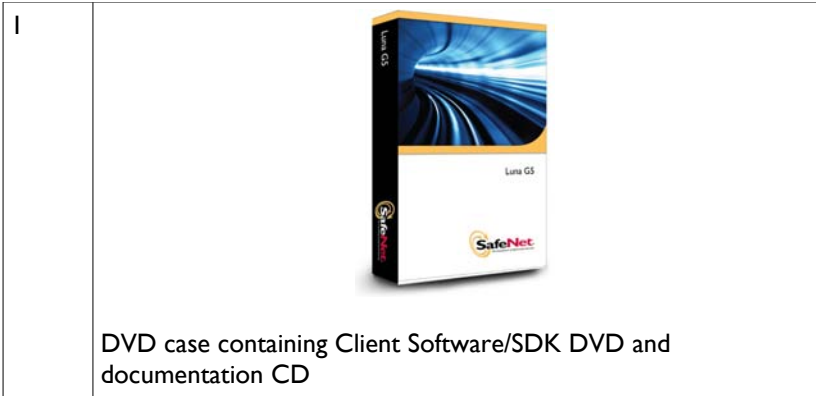


SafeNet HSM products that are taken out of service should not be discarded with ordinary waste. Follow the WEEE or other directives that apply in your country.

## Contents Received (Password-authenticated)

The following are the standard items that you should have received as your basic order for a Password-Authenticated Luna G5.

Qty	Item
1	 <p data-bbox="219 656 373 683">Luna G5 HSM</p>
1	 <p data-bbox="219 943 437 971">Power Supply Cord</p>
1	 <p data-bbox="219 1211 551 1239">USB A to 5-pin (Mini-B) Cable</p>



The above is the complete set, if your Luna G5 is the Password-authenticated version.

**PED-authenticated Luna G5 Additional Required Items**

If your Luna G5 is the PED-authenticated version, then you might also have ordered the following items (next page).

Note that you can use SafeNet PEDs and PED Keys that you already own and use with other HSMs – PEDs of the same type and version (v2.3.0 and later) are interchangeable, and PED Keys can be used with multiple HSMs if that is appropriate in your context (the only exception is the SRK, which is specific to a single Luna G5). You should purchase the number you need for your own convenient operation, and for backup/standby units as your security policies might require.

Qty	Item
1	 <p data-bbox="218 625 654 649">SafeNet PED II (version 2.3.0 or higher)</p>
1	 <p data-bbox="218 982 888 1031">Cable, Data, 9-pin, Micro-D to Micro-D connectors (for local PED operation)</p>

1	 <p data-bbox="218 418 724 451">Set of iKey PED Keys and peel-and-stick labels</p>
1	<p data-bbox="218 467 894 553">To unlock the Luna G5, you must have one SRK PED Key (purple label) that was shipped separately from your Luna G5. You need the individual SRK that is specific to each Luna G5.</p>

**Additional Options?**


**[Optional]** You can place one or two Luna G5 units in a standard equipment rack, using the optional rack-mount shelf.

Qty	Item
1	 <p data-bbox="218 1138 543 1166">Luna G5 Rack-mount shelf (*)</p>

(\* The SafeNet Luna G5 Rack-mount shelf (available by separate order) fits a “standard” 19-inch equipment rack, allowing you to install up to two Luna G5 units side-by-side in server-room racks. For office use, without rack mounting, Luna G5 units can be placed on a desktop and are stackable.)

# Installing

Here are basic hardware installation instructions (mounting in a rack, connecting cables, etc.) and indication where to go for software installation and configuration instructions.

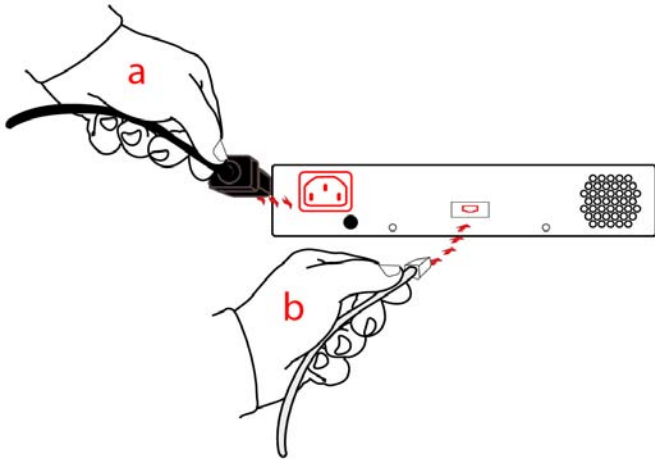
I	 <p>Optionally install the mounting shelf in a suitable equipment rack. Use fasteners appropriate to your brand of equipment rack. The shelf and the Luna G5 units are light-weight and therefore are adequately secured at the front only</p>
---	---

2



Place your Luna G5 unit(s) on the shelf and push back until one of the index posts at the back edge of the shelf engages the index hole on the back panel of each Luna G5.

3



Insert the power (a) and USB (b) cables at the rear panel



4



For PED-authenticated Luna G5, connect the PED at the front panel, using the provided local PED cable – applies only for PED-authenticated HSM; otherwise skip to the next step.

5



If your computer operating system is Linux or Unix, connect the Luna G5 to a USB port on the computer. If you are running Windows, skip this step, for now.

6



Insert the Documentation CD into your client computer.

7



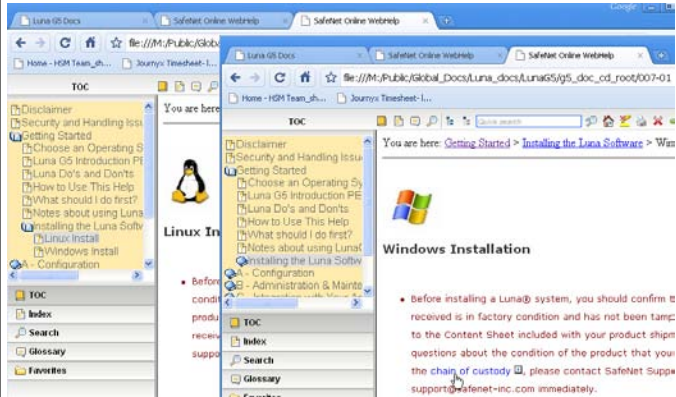
On the Documentation CD, in the docs directory, click START\_HERE.htm to invoke your browser and start reading the Luna G5 Help.

8



Under the “Start” heading, click the link for your operating system and follow the instructions to install the software.

9



After installation, return to the Help for the instructions to configure your Luna G5.

10



When the software has been installed, Windows users can connect the Luna G5 to a USB port on your computer, and the Windows “Found New Hardware” wizard can be pointed to the Luna G5 driver.

## **Next step**

Refer to the Luna G5 Help (WebHelp, accessed via any modern web browser). You can copy the entire contents of the documentation CD to your hard disk for convenient access.

Before you can begin using the Luna G5, it must be initialized and configured for your situation. The steps to do this are in the Configuration section of the Help.

## **Start Using Luna G5**

Any computer that is to act as a client to the Luna G5 must have the Client software installed. The driver is needed to communicate with the USB-connected hardware, and the software library is needed for user or software interaction.

You can use the supplied utilities to administer the Luna G5. You can integrate Luna G5 with any HSM-aware third-party software for your cryptographic needs, or you can use the toolkit and sample code to develop your own application for use with Luna G5, either to use “in-house” or to re-sell to your own customers.